

GSW-1657 Version: 4



## 16-Port-Gigabit-Switch

**Gigabit Speeds: Take Your Data to the Next Level** GSW-1657 is a 16-port Gigabit Ethernet Switch that gives you a high-performance, low-cost, easy-to-use, seamless upgrade to boost your network to 1000Mbps. Increase the speed of your network backbone to a massive 32Gbps and bring Gigabit speeds all the way to your computers. Bandwidth hungry? Not a problem. What happens when you have several users accessing multimedia applications all at the same time? No need to worry as GSW-1657 allows you to move large files faster and easier. Transfer your CGI, CAD, video, or other large multimedia files over the network instantly and without lag. Plug and Play, Flexible and Easy

GSW-1657 is plug-and-play so no configuration is required. Providing auto MDI/MDI-X cable detection on all ports eliminates the need for crossover cables or Uplink ports. Each port can be used as general ports or Uplink ports, and any port can be simply plugged into a server, a hub, a router or a switch, using a straight cable or crossover cable. Diagnostic LEDs which display link status and activity, allowing you to quickly detect and correct problems on the network.

### Key-features

- 16 Gigabit-Ethernet Ports
- 10/100/1000Mbps Übertragungsgeschwindigkeit
- Unterstützt Auto-Learning und Auto-Aging für bis zu 8K MAC-Adressen
- 9K Jumbo-Frames für hohe Transferraten
- Minimiert den Stromverbrauch durch moderne Energieeffizienz (IEEE-802.3az)
- 19" Metallgehäuse

### Specifications

#### Systemeigenschaften

##### Standards & Protokolle:

IEEE802.3(10BASE-T)

IEEE802.3u(100BASE-T)

IEEE802.3ab(1000BASE-T)

IEEE802.3az Energy Efficient Ethernet

##### Speicher:

64Kbit

##### Pufferspeicher:

2Mbit

##### Buchse:

Full Shielded



**Indikator:**  
Power  
LINK/ACT  
1000M  
loop detection

**Übertragungsmethode:**  
Store- forward

**Leistungsaufnahme:**  
AC100-240V

**Ausgangsleistung:**  
12V/2A

**Energieverbrauch:**  
15W

**Backplane (Gbps):**  
32Gbps

**MAC-Adresstabelle:**  
8K

## Funktionen

**Allgemein:**  
16 x 10/100/1000Mbps

## Leistung

**Weiterleitungsrate:**  
1488000pps

**Jumbo-Frames:**  
9KB

## Environment

**Energieeffizienz:**  
IEEE802.3az Energy Efficient Ethernet

**Temperatur bei Betrieb (°C):**  
0-40°C

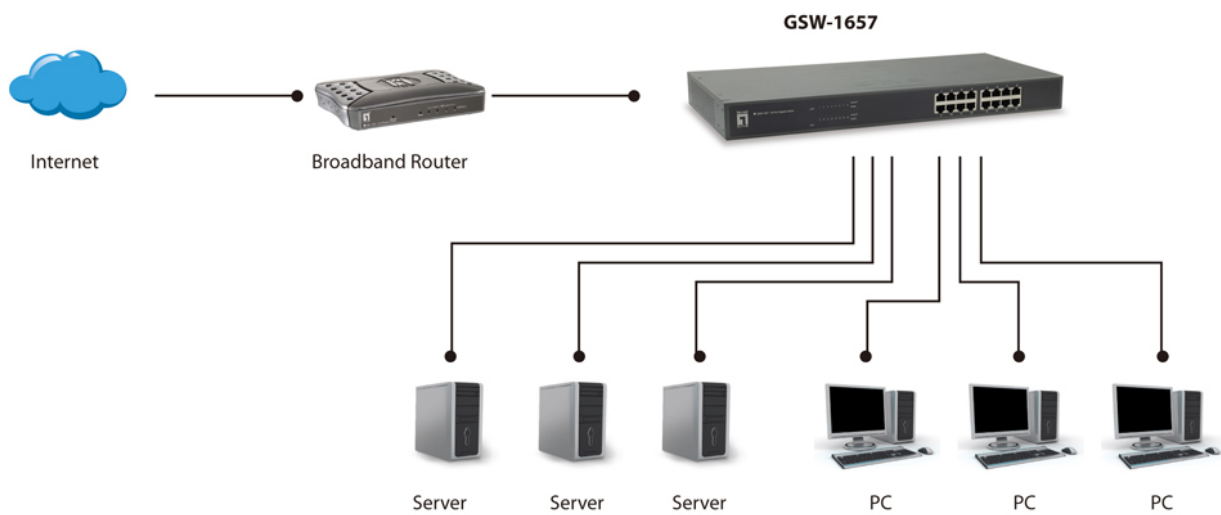
**Luftfeuchtigkeit bei Betrieb:**  
10%~90%

## Abmessungen

**Abmessungen (W x D x H mm):**  
440\*220\*44 (mm)

**Gewicht:**  
1kg

## Diagramm



---

## Order Information

GSW-1657

---

## Package Contents

GSW-1657  
Stromkabel  
19" Einbaurahmen  
Quick Installation Guide

No liability or responsibility for any errors or omissions in the content.  
Specifications are subject to change without notice.  
All mentioned brand names are registered trademarks and property of their owners.  
Copyright © Digital Data Communications GmbH, Germany. All Rights Reserved.