



24-Port-Gigabit-Switch

Gigabit Speeds: Take Your Data to the Next Level GSW-2457 is a 24-port Gigabit Ethernet Switch that gives you a high-performance, low-cost, easy-to-use, seamless upgrade to boost your network to 1000Mbps. Increase the speed of your network backbone to a massive 48Gbps and bring lightning fast Gigabit connections to all your computers.

Bandwidth hungry? Not a problem. What happens when you have several users accessing multimedia applications all at the same time? No need to worry as GSW-2457 allows you to move large files faster and easier. Transfer your CGI, CAD, video, or other large multimedia files over the network instantly and without lag.

Plug and Play, Flexible and Easy GSW-2457 is plug-and-play so no configuration is required. Providing auto MDI/MDI-X cable detection on all ports eliminates the need for crossover cables or Uplink ports. Each port can be used as general ports or Uplink ports, and any port can be simply plugged into a server, a hub, a router or a switch, using a straight cable or crossover cable.

Key-features

- 24 Gigabit-Ethernet Ports
- 10/100/1000Mbps Übertragungsgeschwindigkeit
- 9K Jumbo-Frames für hohe Transferraten
- Unterstützt Auto-Learning und Auto-Aging für bis zu 8K MAC-Adressen
- QoS-Steuerung für Verkehrspriorisierung und Bandbreitenmanagement
- Minimiert den Stromverbrauch durch moderne Energieeffizienz (IEEE-802.3az)
- 19" Metallgehäuse
- Lüfterloses Design

Specifications

Systemeigenschaften

Standards & Protokolle:

IEEE802.3(10BASE-T)
IEEE802.3u(100BASE-T)
IEEE802.3ab(1000BASE-T)
IEEE802.3az Energy Efficient Ethernet

Speicher:

4Mbit

**Pufferspeicher:**

4.1Mbit

Buchse:

Full Shielded

Indikator:

Power, LINK/ACT,1000M

Übertragungsmethode:

Store- forward

Leistungsaufnahme:

100-240V/AV 50Hz

Energieverbrauch:

15W

Backplane (Gbps):

48Gbps

MAC-Adresstabelle:

8K

Funktionen

Allgemein:

24 x 10/100/1000Mbps

Leistung

Weiterleitungsrate:

1488000pps

Jumbo-Frames:

9KB

Environment

Energieeffizienz:

IEEE802.3az Energy Efficient Ethernet

Temperatur bei Betrieb (°C):

0-40°C

Luftfeuchtigkeit bei Betrieb:

10%~90%

Abmessungen

Abmessungen (W x D x H mm):

440x220x44mm

Gewicht:

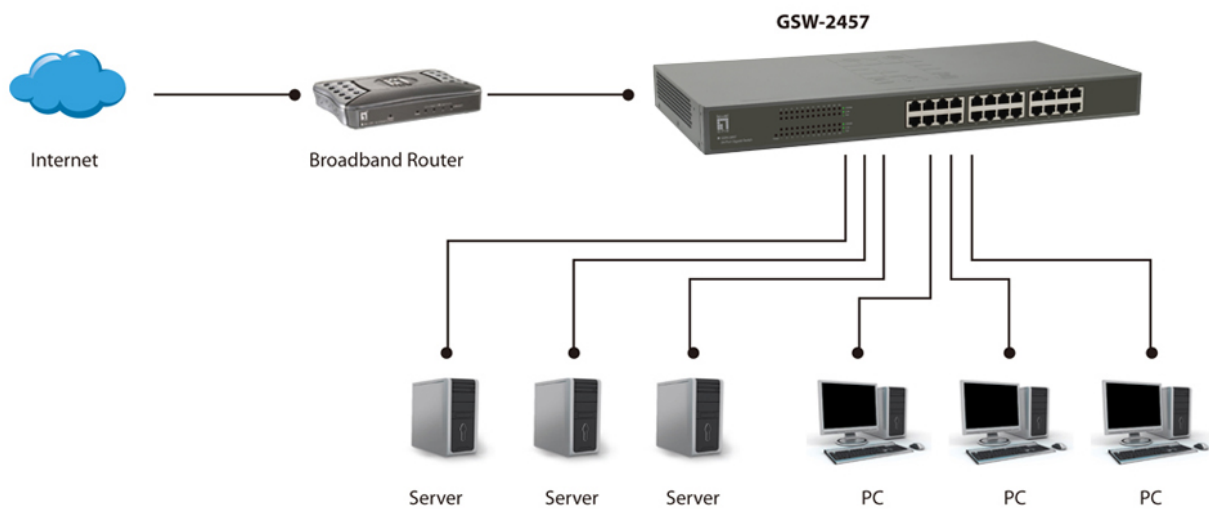
2kg

Approval and Compliance

Zertifizierung:

CE,FCC

Diagramm



Order Information

GSW-2457

Package Contents

GSW-2457
Stromkabel
19" Einbaurahmen
Quick Installation Guide

No liability or responsibility for any errors or omissions in the content.
Specifications are subject to change without notice.
All mentioned brand names are registered trademarks and property of their owners.
Copyright © Digital Data Communications GmbH, Germany. All Rights Reserved.